

Quality Report

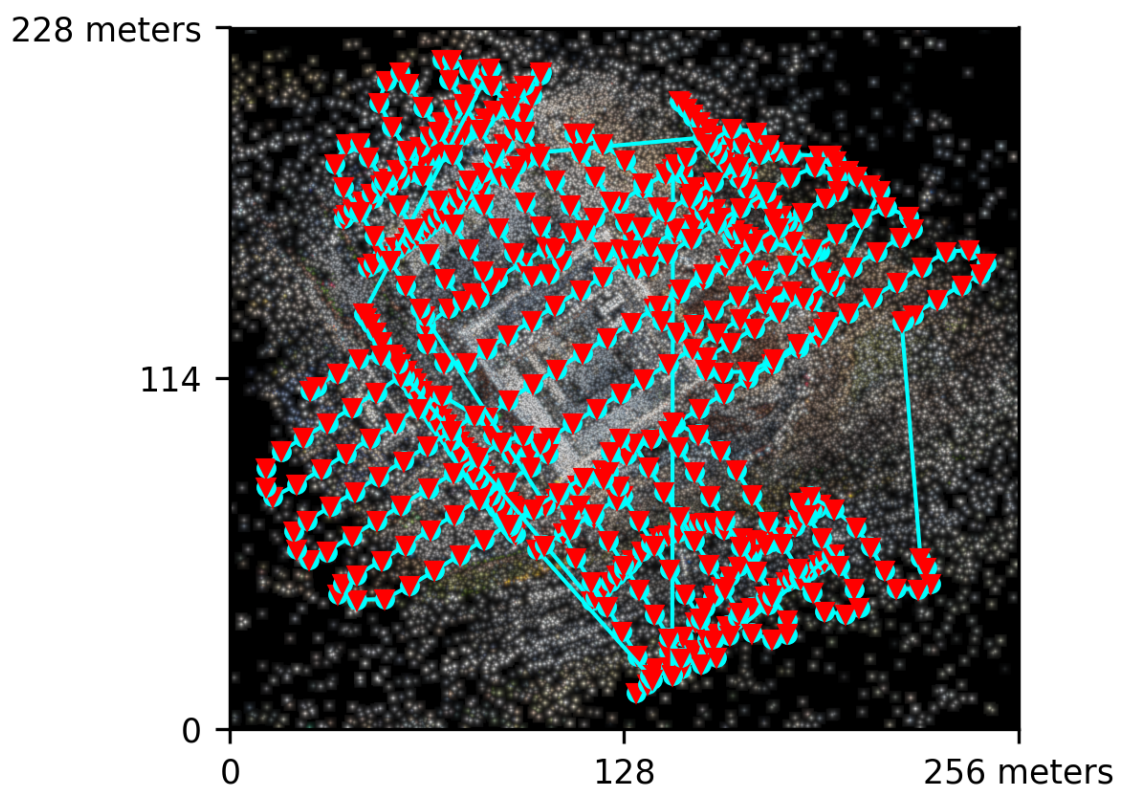
Processed with LGT Engine version 4.1.8

Dataset Summary

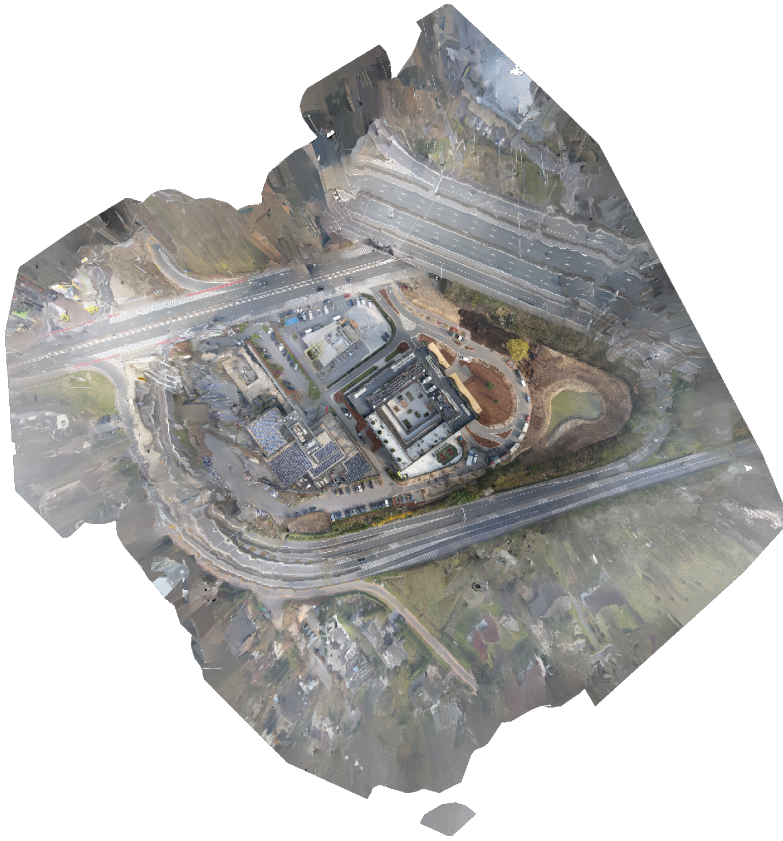
Date	23/03/2026 at 13:19:23
Area Covered	0.048244 km ²
Processing Time	1.0h:51.0m:9.0s
Capture Start	23/03/2026 at 09:00:40
Capture End	23/03/2026 at 09:40:17
Coordinate Reference System	WGS 84 / UTM zone 31N

Processing Summary

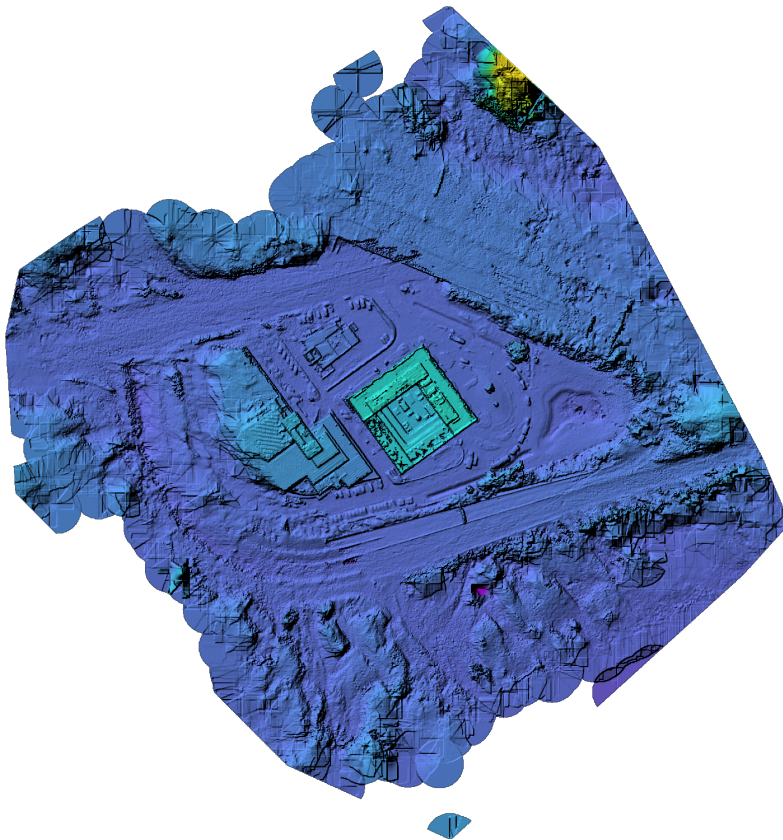
Reconstructed Images	691 over 691 shots (100.0%)
Reconstructed Points (Sparse)	519746 over 574687 points (90.4%)
Reconstructed Points (Dense)	70,564,863 points
Average Ground Sampling Distance	1.7 cm
Detected Features	8,228 features
Reconstructed Features	3,483 features
Geographic Reference	GPS
GPS errors	0.05 meters



Previews



Orthophoto



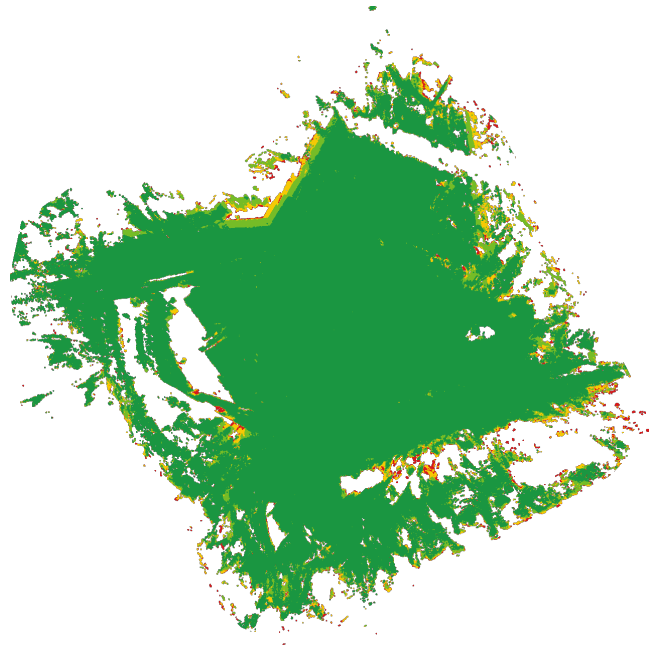
Digital Surface Model



17.12m

172.22m

Survey Data



■ 2 ■ 3 ■ 4 ■ 5+

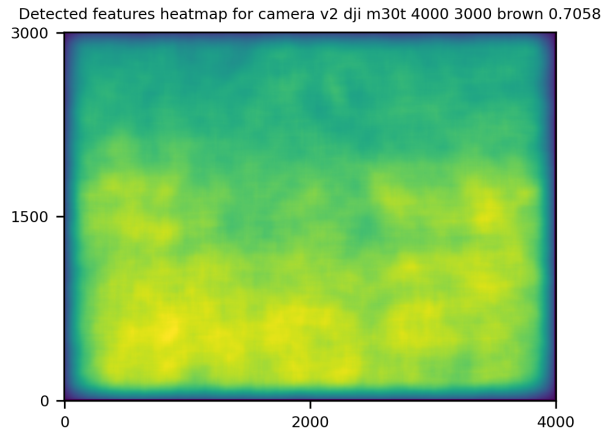
GPS/GCP/3D Details

GPS	Mean	Standard Deviation	RMS Error
X Error (meters)	0.000	0.038	0.038
Y Error (meters)	-0.001	0.037	0.037
Z Error (meters)	0.000	0.028	0.028
Total			0.053

3D	Mean	Standard Deviation	RMS Error
X Error (meters)	0.305	2.238	2.259
Y Error (meters)	0.436	3.571	3.598
Z Error (meters)	0.242	0.606	0.653
Total			0.702

Accuracy	Absolute	Relative
Horizontal CE90 (meters)	0.085	0.864
Vertical LE90 (meters)	0.050	0.509

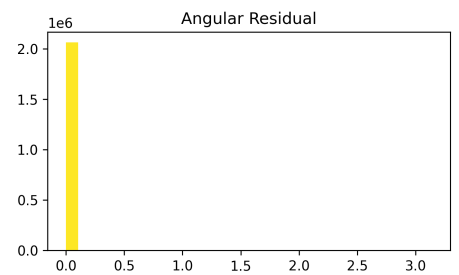
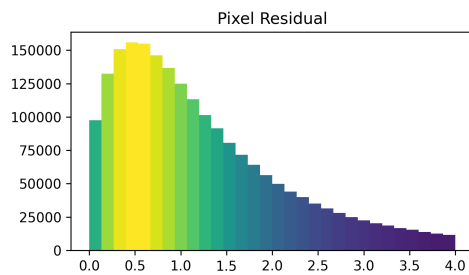
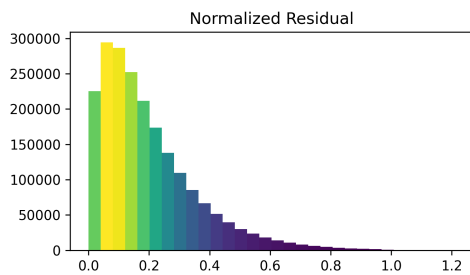
Features Details



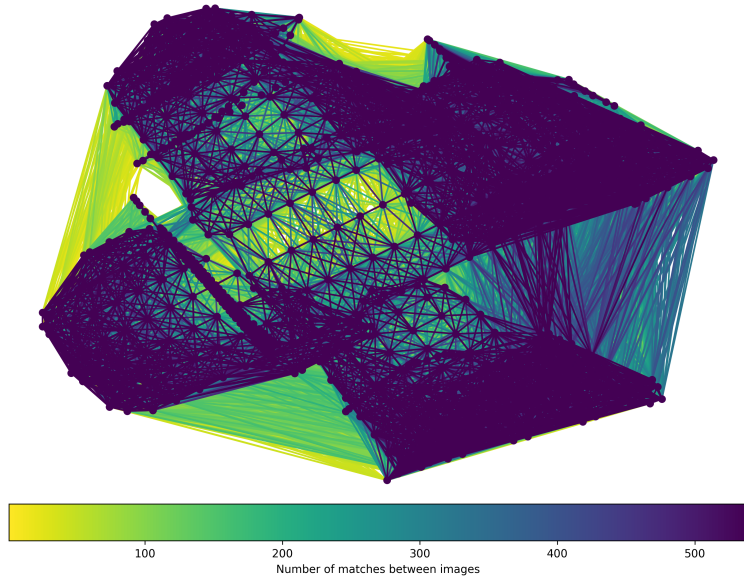
	Min.	Max.	Mean	Median
Detected	4089	10000	7926	8228
Reconstructed	375	5967	3333	3483

Reconstruction Details

Average Reprojection Error (norm / pixels / angular)	0.20 / 1.22 / 0.00036
Average Track Length	4.43 images
Average Track Length (> 2)	6.53 images



Tracks Details



Length	2	3	4	5	6	7	8	9	10
Count	240709	96822	51814	31541	21193	15124	10944	8524	6564

Camera Models Details

v2 dji m30t 4000 3000 brown 0.7058

	k1	k2	k3	p1	p2	focal	aspect	cx	cy
Initial	0.0000	0.0000	0.0000	0.0000	0.0000	0.7059	1.0000	0.0000	0.0000
Optimized	0.1673	-0.4056	0.1989	-0.0002	0.0002	0.7219	1.0000	0.0029	-0.0055

